

FOR SALE: CRUISER-READY
ISLAND PACKET

SAILING VESSEL BOSCO

31



ISLAND PACKET YACHTS®

America's Cruising Yacht Leader

THE ISLAND PACKET 31

1987 SLOOP RIG | CRUISER-READY



SPECIFICATIONS

Overall Length (LOA)	34' 4"	Mast Above DWL	43' 6"	Headroom	6' 3"
Length on Deck (LOD)	30' 7"	Displacement	11,000 lbs	Engine	29HP 3YM30AE D.
Length Water Line	27' 9"	Ballast	4500 lbs	Fuel	Aluminum - 25 gal
Draft: Keel	4' 0"	Sail Area (100% F.T.)	531 S.F.	Water	Polyethylene - 60 gal
Beam	11' 6"	Cabins / Berths	3 / 7		





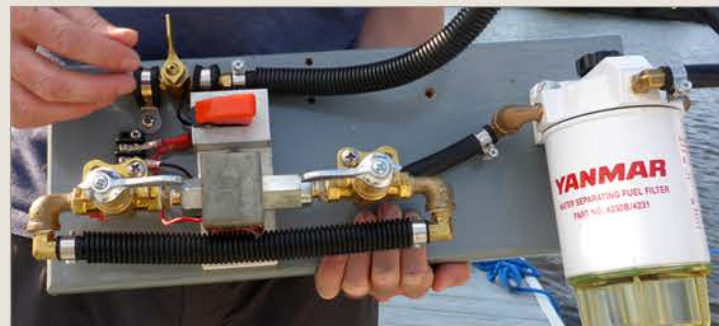
ENGINE

YANMAR **3YM30AE** 29 HP DIESEL ENGINE

YEAR: JUL 2015
INSTALLED: OCT 2015
HOURS: 490
WARRANTY: YES

Less than 1 year old, the Yanmar **3YM30AE** diesel has been impeccably maintained and is still under warranty! That includes a new transmission + 120 AMP alternator.

Detailed instructions and documentation included to make maintenance a breeze.

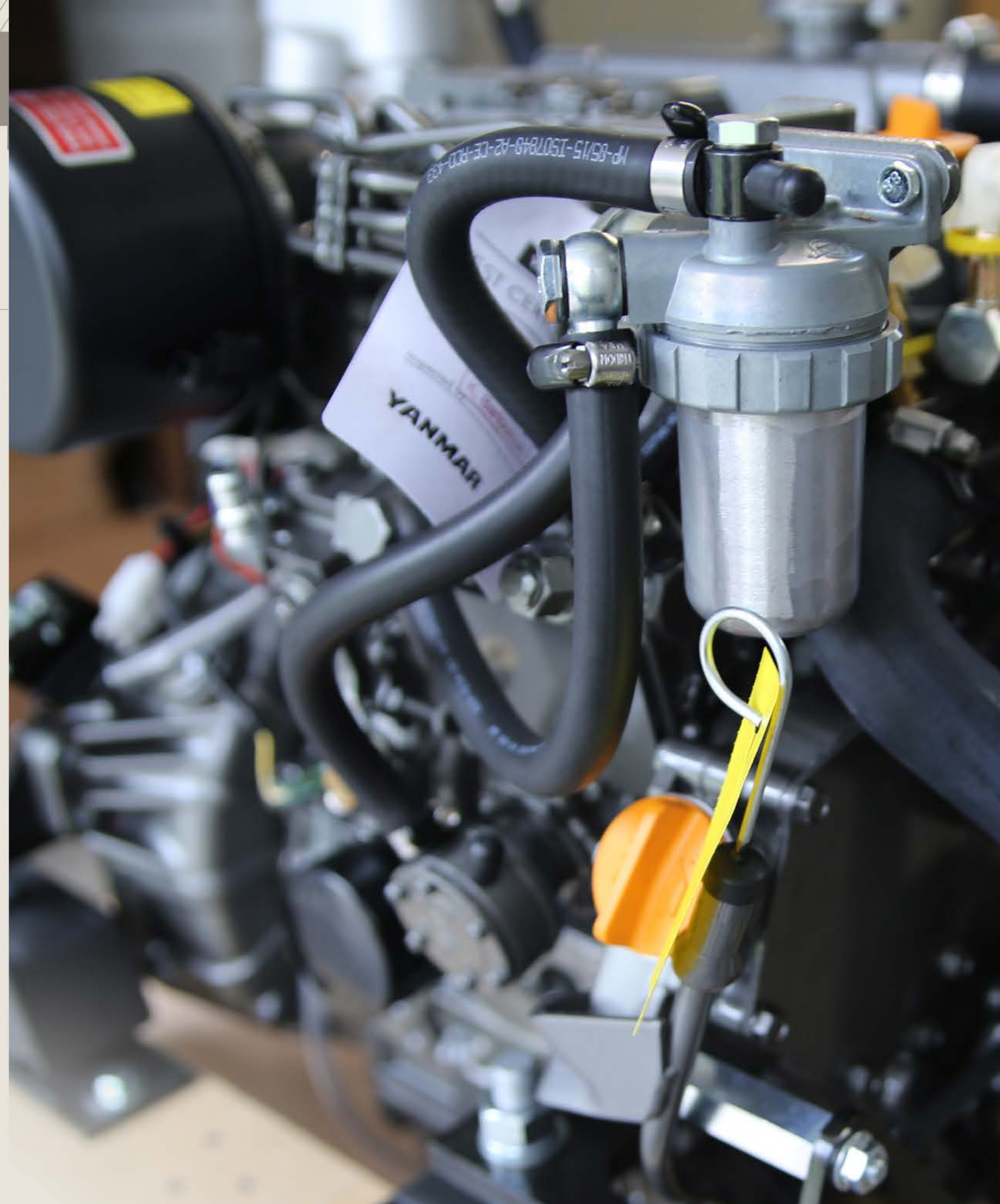


Custom Fuel Bleed System

A unique fuel filtration bleed system was custom designed & installed with the new engine. Pet cocks prevent depressurization + electric fuel pump makes bleeding a breeze.

- Polished 25 gal. Fuel Tank

Max. output at crankshaft	29HP, 3200 RPM
Tot. Disp.	1.266 L
configuration	4-stroke cycle
cylinders	3
engine weight	280 lbs



COMPLETE ELECTRICAL OVERHAUL

A common problem on old boats is the inability for all systems to run effectively and efficiently with just a house battery bank. Most often this is caused by a piecemeal combination of different things and ill-sized cables.

SV BOSCO addressed this with an all-new electrical system including **5 - 105aH Duracell Ultra Deep Cycle Marine Batteries (525 aH total)**, properly sized **Ancor Extra Fine Tinned Battery Cables** and a design that leaves virtually **ZERO** voltage drop between systems.

Every DC system can run at once. Each system has been updated and upgraded; including a state-of-the-art, **BDxp SeaFrost Refrigeration & Freezer**, **2000 Watt PS inverter**, **all-new LED lighting** and an **eMarine hybrid wind & solar solution**. SV BOSCO is the epitome of efficiency with a comprehensive power solution, enabling her to remain off-the-grid indefinitely. *BOSCO sailed over 3200 miles in 8 months, and not once needed shore power.*



12 VOLT DC POWER AND 30 AMP 110 VOLT AC POWER



GP inverter



GP Remote

GP-SW2000-12, 2000 Watt (Pure Sine) inverter + GP-SWR-B-12 Remote

The inverter is the gateway to seamless AC electrical power when unplugged from shore. S/V BOSCO comes equipped with a **2000W** PSI (PURE) sine wave inverter. It is large enough to power any electronic device on board from tools to the air conditioner. The pure sine wave reliably powers devices that modified sine wave will not (like printers or laptop computers).



Freezer Bin



Compressor

SeaFrost 12V - BDxp Refrigeration & Freezer Bin + Digital Control - Thermostat / Speed Control

The new state-of-the-art SeaFrost BDxp is a perfect fit for SV BOSCO. This system keeps everything from sensitive produce to ice without batting an eye. It comes complete with the 11"x13"x7" freezer bin. It can keep ice cream solid in temperatures above 90°F!

The BDxp has both air and water cooling options. With the additional AEO (Adaptive Energy Optimizing) feature, it senses the amount of energy needed and automatically adjusts the compressor speed. This is one of the most efficient systems on the market and it requires as little as 5 amps to function.



Digital Control



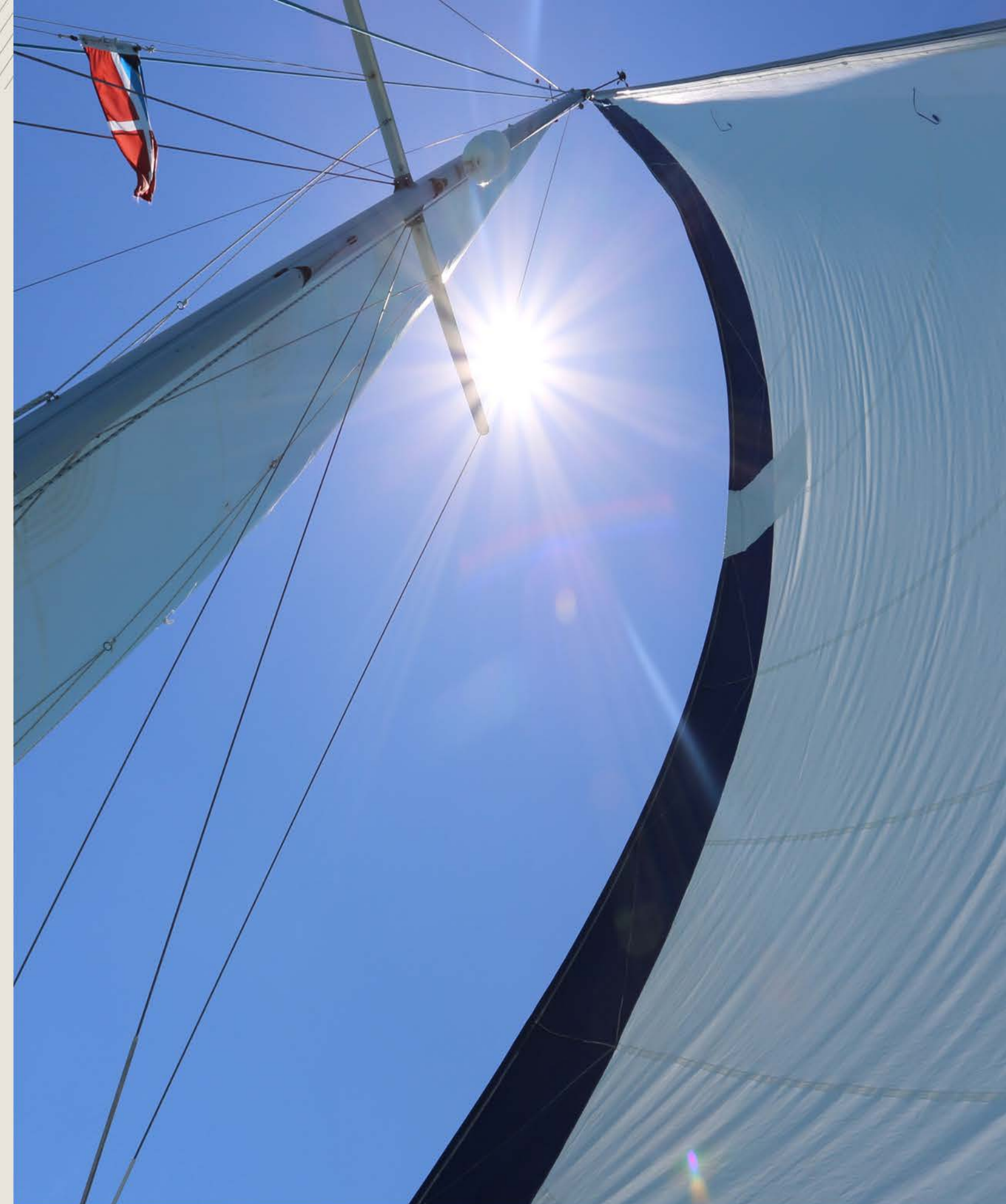


12 VOLT HYBRID WIND / SOLAR SOLUTION | 400W + 280W

Renewable energy means virtually unlimited power; a necessity for the cruising sailboat. However, it can be difficult to achieve, especially when combining different forms (like wind & solar). Each accepts and distributes charge in different ways. The solution is SV BOSCO's new **hybrid system**, designed specifically to address that complication. This system can accept the full scope of charge from both sources independently OR combined to deliver the most amount of energy available.



- Silent Wind 400W Turbine with high performance blades
- 2 - Kyocera 140W Solar Panels (280W total)
- e20 Solar and Wind Control Panel 12V 50 Amp for easy control
- 40-amp solar charge controller
- Remote battery monitor and amp-hour counter





WELCOME HOME

SUITE / HOME





CUSTOM FEATURES MAKE FOR A COMFORTABLE CRUISING BOAT

Nature's Head Composting Toilet

A big affliction for many boaters is the head. They are messy, smelly and require a ton of plumbing, storage and devices to work. They break a lot and are a pain to clean. SV BOSCO has a composting head, which virtually eliminates all of these issues.. No need for pump-outs (or a holding tank), nothing will break or clog, there is no smell and cleaning is fast & easy!

Custom 6" Handcraft Latex Mattress

The most important things when cruising are eating well and sleep. To combat the latter, SV BOSCO has a custom-built Handcraft Mattress in the V-berth, featuring 6" Medium Density Tallalay Latex Core, Circular Knit Fabric Quilted Standard Firm Style that stays cool and dry. Its super comfy too!



CUSTOM FEATURES MAKE FOR A COMFORTABLE CRUISING BOAT

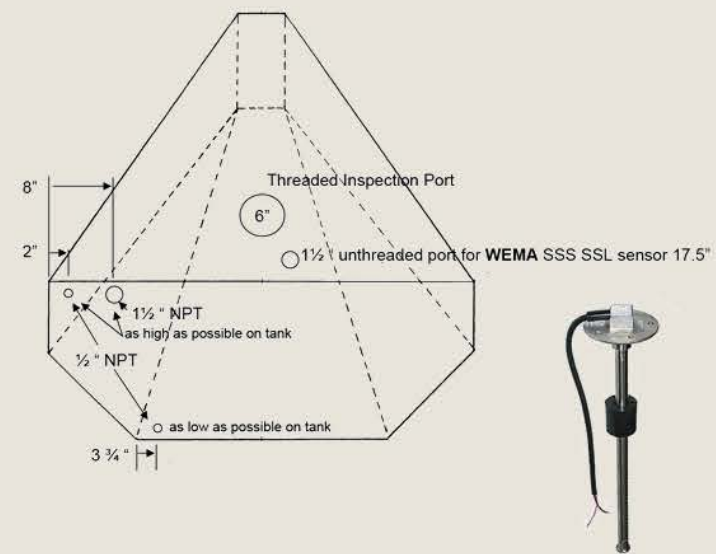


Seagull IV X-1F Marine Water Purifier

A good water purifier is essential for a cruising sailboat. Seagull IV X-1F is a 1-gallon-per-minute under-sink purifier certified to meet EPA protocol against bacteria, cysts and viruses. It excels at removing chemical and aesthetic contaminants including herbicides, pesticides, chlorine, foul tastes, odors & colors, for great water on demand too!

THE *new* WATER TANK

SV BOSCO has been upgraded with a new 60-gallon fresh water Polyethylene tank. The beauty of polyethylene is its high density and strength along with some other amazing features: it never corrodes, has no taste or odor, is maintenance-free and extremely easy to clean.



With an all new water tank, many of the faucets and plumbing were also upgraded to suit the new installation. Now SV BOSCO has clean and clear running water!



STORAGE



AMPLE STORAGE BOTH ABOVE AND BELOW DECK

Storage, Storage, Storage...And LOTS of it!

Tons of storage under and behind settees, under counter tops, drawers, shelves, lockers and cabinets throughout SV BOSCO lets you have it all without feeling cluttered. She can haul months of provisions, gear, tools, you name it... and still have room to spare. The deep cockpit lazarettes are great for larger items. All done without sacrificing living space.



Reinforced Dodger + Sun Panels

SV BOSCO's canvas dodger has been reinforced & has custom aluminum rail mount to ensure structural integrity and years of performance. It has been outfitted with convenient side-pockets for storage and sun panels that protect from 95% of UV rays for comfort and protection.

Custom Rain Catchment System

A source of fresh water is imperative for a cruising vessel. SV BOSCO has a custom rain catchment system designed to funnel rain water into the fresh water tank. It also doubles as an awning, sun shade and wind scoop.



STACK PACK + SAIL

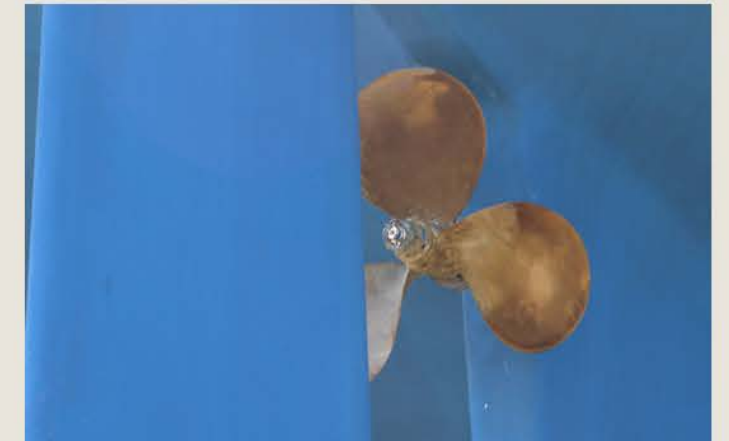
The best part about a cruising sailboat is that you can travel indefinitely. SV BOSCO comes cruiser-prepared with a refurbished & reinforced main (with 3 reef points) and a refurbished 135% Genoa on a roller furling, new main & furling halyards, new topping lift and the most convenient boom-mounted Stack Pack (Cradle Cover) with built-in jack lines. She is ready and raring to go.



COCKPIT



HULL / PROP



MAINTENANCE IS THE KEY TO A LONG-LASTING CRUISING VESSEL

Anti-fouling Bottom Paint

SV BOSCO has had a great history of cruising. To keep the hull in tip-top shape, she has a fresh application of bottom, anti-fouling paint. Now clean, smooth & organism-free hull.

Re-aligned drip-less 3-blade propeller

SV BOSCO has an upgraded drip less prop from the original IP31 design. She has a new cutlass bearing, stern tube & zincs installed and has been realigned to ensure a long lifespan for the engine and a safe, reliable vessel.

OVERHEAD



SOME EXTRAS



Firm mount swim platform / ladder



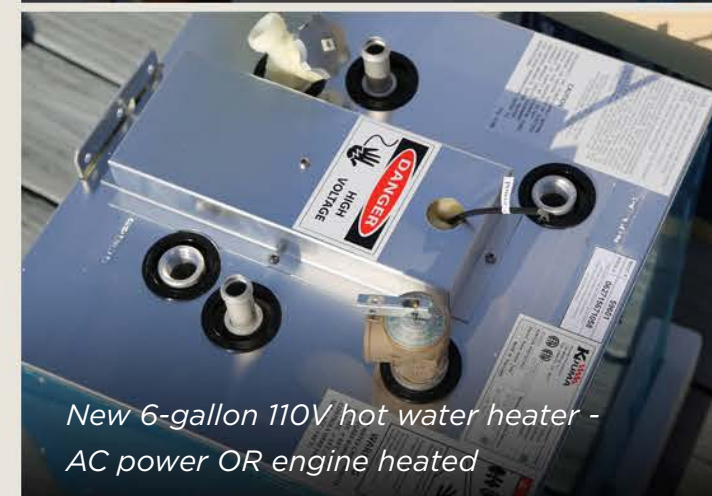
Garmin GPS Map 440 + depth sounder



Raymarine Wireless T101 Wireless Wind Sys.



Autohelm 3000 auto pilot



New 6-gallon 110V hot water heater - AC power OR engine heated



33lb. Rocna | 25lb. Danforth | CQR Anchors + 100 feet Galvanized Chain + 500 feet rode



BOAT SPECS

DIMENSIONS:

Overall Length (LOA): 34 feet 4 inches
Beam: 11 feet 6 inches
Waterline Length (LWL): 27 feet 9 inches
Length on Deck: 30 feet 7 inches
Max Draft: 4 feet
Ballast: Full Foil Keel, 4500 lbs
Displacement (Dry): 11,000 pounds
Bridge Clearance: 45 feet 5 inches (with VHF antenna)
Sloop Rig, Sail Area 100%: 531 square feet
Custom Polyethylene Fresh Water Tank: 60 gallon **(NEW - JUN 2015)**
+ 6 gal water heater & 4 jerry jugs = 81 gallons fresh water
Fuel Tank: 25 gallons **(POLISHED - JUL 2015)**

MECHANICAL:

NEW 29HP Yanmar 3YM30AE Diesel Engine with 490 hours **(NEW - NOV, 2015)**
*** Engine under warranty & all maintenance at 0 hrs from June, 2016***
Custom Fuel Filtration System **(NEW - NOV, 2015)**
New Exhaust Hose & Elbow **(NEW - JUN, 2016)**
Engine belt driven fresh water pump

- spare parts / engine manuals / warranty info
- detailed documentation of maintenance & mileage

3-blade propeller + drip-less prop shaft **(ALIGNED - JUN, 2016)**
New Cutlass Bearing & Stern Tube **(NEW - JUN, 2016)**
New Zincs **(NEW - JUN, 2016)**
New Bottom Paint **(NEW - JUN, 2016)**

ELECTRICAL:

12-volt DC power and 30-amp 110-volt AC power
GP-SW2000-12, **2000 Watt** pure wave inverter + GP-SWR **B-12 Remote (NEW - OCT, 2015)**
Upgrade all electrical wiring - Ancor Extra Fine Tinned Battery Cable **(NEW - OCT, 2015)**
Electric panel - battery gauge **(NEW - OCT, 2015)**
5 - Duracell Ultra Deep Cycle Marine Batteries (525 amp hr -12V series/parallel) **(NEW - OCT, 2015)**
Upgraded fuses on batteries: Blue Seas 600 Amp Negative Bus Bar + 300 Amp Fuse Block & Cover **(NEW - OCT, 2015)**
40 Amp 3-stage Battery Charger **(2011)**
Hatch Air Breeze Air Conditioning unit
6-gallon 110V hot water heater, AC power OR engine heated **(NEW - NOV, 2015)**
LED anchor, nav & interior cabin lights **(NEW - NOV, 2015)**
Rule 1500 Bilge Pump & Auto Float Switch + Manual Bilge Pump in cockpit
Spare sea water cooled pump (refrigerator/freezer) **(NEW - OCT, 2015)**
4-DC-powered fans (3-Guest - **NEW JUL, 2015** 1-Cafrauno); 2 - Solar Fans (1-galley, 1-head) **(NEW JUL, 2015)**
5 - AC outlet plugs, 1- DC outlet; 1 - 30 amp, 50 foot shore power cord & 1 - 30-to-15 amp adapter

SV BOSCO sailed over 3200 miles in 8 months. With refrigeration / freezer, electrical upgrades and renewable energy, she was not plugged into shore power once in that entire time.

ELECTRONICS:

Garmin GPS Map 440 chart plotter, helm mounted. Data cards U.S. and Bahamas
Raymarine Wireless T101 Wireless Wind System **(NEW - NOV, 2015)**
Autohelm 3000 autopilot, with removable head unit
Garmin depth sounder
2 - Kyocera 140W Solar Panels (280W in total) **(NEW - OCT, 2015)**
Silent Wind 12V DC Wind Generator w/ high performance blades (400W) **(NEW - OCT, 2015)**
e20 Solar and Wind Control Panel 12V 50 Amp **(NEW - OCT, 2015)**
40-amp solar charge controller **(NEW - OCT, 2015)**
Remote battery monitor and amp-hour counter **(NEW - OCT, 2015)**
Kenwood Bluetooth radio/CD player (USB & 1/8" connection for MP3 player): cabin & cockpit speaker system
VHF radio mounted
Cobra MR HH350 FLT Floating 6W VHF Radio **(NEW - MAY, 2015)**
Barometer, Clock, Compass

GALLEY:

SeaFrost 12V - BDxp refrigeration and freezer bin **(NEW - OCT, 2015)**
Digital Controls: thermostat, thermometer and speed control for SeaFrost **(NEW - OCT, 2015)**
Manual fresh water pump **(NEW - OCT, 2015)**
Hot and Cold Pressure Water
Seagull IV X-1F Drinking Water Purifier - Marine Model **(NEW - OCT, 2015)**
Spare Replacement Cartridge for Seagull Filter **(NEW - OCT, 2015)**
2 - 10 pound aluminum propane tanks with shut-off solenoid ((1 connected, 1 spare **(NEW - JUN, 2015)**))

DECK & HULL:

Re-enforced Bimini w/ pockets, Dodger & Sun Panels **(UPGRADED - NOV, 2015)**
Custom Water Catchment System doubles as wind scoop, awning and sun shade **(NEW - OCT, 2015)**
New Bottom Paint **(NEW - JUN, 2016)**
33lb. Galvanized Rocna Anchor w/ 100 feet Galvanized High-Test Chain **(NEW - JUN, 2015)** + 250 feet rode
25lb. Danforth anchor with 250 feet of rode
35lb. CQR anchor
Chain hook and bridle system
Double stainless steel bow anchor rollers
Teak anchor platform (bowsprit)
4 - 5 gallon water jerry cans (blue) **(NEW - JUN, 2015)**
3- 5 gallon gas jerry cans (yellow) **(NEW - JUN, 2015)**
1- 5 gallon gas jerry can (red) **(NEW - JUN, 2015)**
Custom Mount System on Deck for Jerry Jugs **(NEW - JUN, 2015)**
Stainless steel fishing rod holder **(NEW - JUN, 2015)**
Firm Mount Swim Platform with Fold Down Ladder
Water resistant cockpit & captain chair cushions, 2 cockpit chairs, cockpit table w/ Extra Leaf, cockpit shower



BOAT SPECS

SAILS / RIGGING / COCKPIT:

Refurbished & re-enforced main with 3 reef points **(OCT, 2015)**
Refurbished 135% Genoa on Roller Furling **(OCT, 2015)**
New Main & Furling Halyards **(NEW - OCT, 2015)**
Stack Pack System (Doyle) - Boom mounted with built-in jacklines **(NEW - NOV, 2015)**
New Topping Lift **(NEW - NOV, 2015)**
4 self-tailing winches in cockpit (1 - Main Travel Sheet Winch - Lewmar 30, 2 - Port & Starboard Jib Winches - Lewmar 43, 1 - Jib Furling Winch - Lewmar 16) + 2 mast-mounted Winches - Lewmar 7
3 stainless steel winch handles, 1 floating winch handle
Tripod mounting system for wind generator **(NEW - OCT, 2015)**
Custom aluminum rail mount for solar above Bimini **(NEW - OCT, 2015)**
New masthead mounted Windex (mechanical wind direction indicator) **(NEW - OCT, 2015)**
New Rudder Steering Stop Port Side **(NEW - JAN, 2016)**
Spare aluminum and electrical wiring for system
Fenders various sizes - 3 large, 4 small, 1 fender board
Full set Dock Lines & Spares
Mast mounted whisker pole
Bow pulpit, stern rails, stanchions, boom vang, traveler,
Stainless steel standing rigging (1 forestay, 2 backstays, 3 port, 3 starboard shrouds)

HEAD:

Nature's Head Self Contained Composting Toilet and Spare Urine Bottle **(NEW - JUN, 2015)**
1 - 3" Day/Night Solar Vent / Fan **(NEW - JUN, 2015)**
Scandvik sink faucet/shower combo **(NEW - JUN, 2015)**
Hot & Cold pressured water

MISC:

Custom Polyethylene Water Tank 60 gallon (access in V-berth) **(NEW - JUN, 2015)**
Custom Latex 6" Mattress V-berth **(NEW - JUN, 2015)**
Upgraded salon cushions w/ micro suede upholstery
Bosun's Chair
Hatch Windscoop
Mosquito net companionway covers, Plexiglas cover
50-foot portable water hose (pocket hose)
2 extendable boat hooks
Ships Library - Manuals, Maps & Chart / Sailing books
Canvas covers for binnacle, hatches, engine panel
Custom shelves in forward lockers; bulkhead mounted fold-down table, fully extendable with storage for glasses, wine, miscellaneous items; anchor chain locker access from v-berth, tons of storage under settees, folding nav table doubles as privacy wall for quarter berth plus sliding accordion door for quarter-berth to make fully private state room for guests; 4 overhead opening hatches, 9 stainless steel working port lights with "CloZure" screens.

SAFETY:

4 WM inflatable life jackets
Set of soft wood boat plugs **(NEW - OCT, 2015)**
Distress MOB kit with flag, flares, flare gun **(NEW - OCT, 2015)**
Motion Detection Light & Security Alarm Matt **(NEW - OCT, 2015)**
3 fire extinguishers
Air horn and ship bell
Throwable PFD Life Sling

FOR SALE - CRUISER-READY ISLAND PACKET 31

If interested, please contact Jacob at svbosco1@gmail.com for price information and details.

To learn more about SV BOSCO's history with us, visit www.JakeAndJillAdventures.com



